

# Cheetah Plus 72M 390-410 Watt

MONO PERC MODULE

Positive power tolerance of 0~+3%

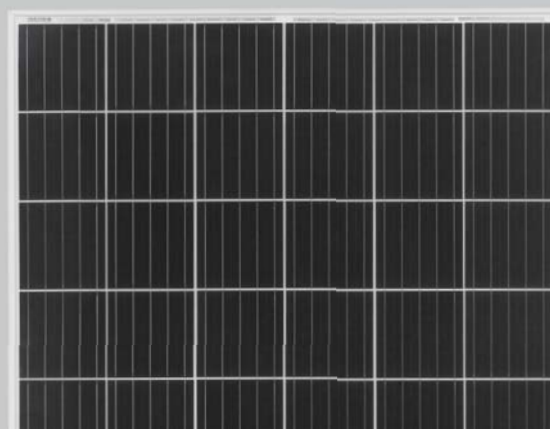
ISO9001:2008, ISO14001:2004, OHSAS18001  
certified factory

IEC61215, IEC61730, UL1703 certified product

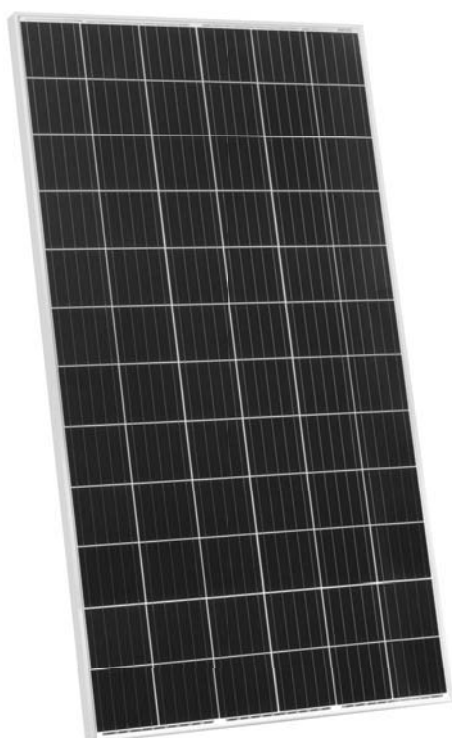
(Made in China)



PERC



## KEY FEATURES



### 5 Busbar Solar Cell

5 busbar solar cell adopts new technology to improve the efficiency of modules, offers a better aesthetic appearance, making it perfect for rooftop installation.



### High Efficiency

Higher module conversion efficiency (up to 20.68%) benefit from Passivated Emmitter Rear Contact (PERC) technology.



### Extended PID Resistant

Limited power degradation of Eagle Plus module caused by PID effect is guaranteed under extremely strict testing condition (85 C /85%RH,500hours)for mass production.



### Low-light Performance:

Advanced glass and surface texturing allow for excellent performance in low-light environment.



### Severe Weather Resilience

Certified to withstand: wind load (2400 Pascal) and snow load (5400 Pascal).

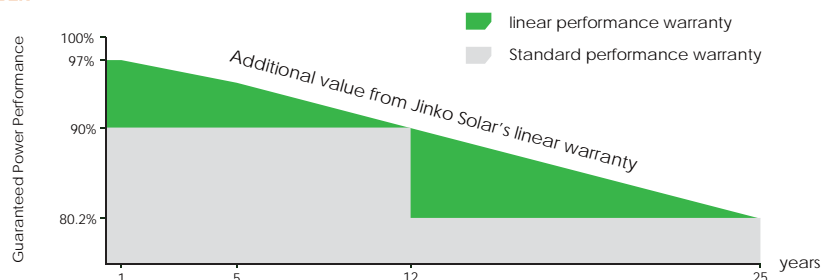


### Durability Against Extreme Environmental Conditions

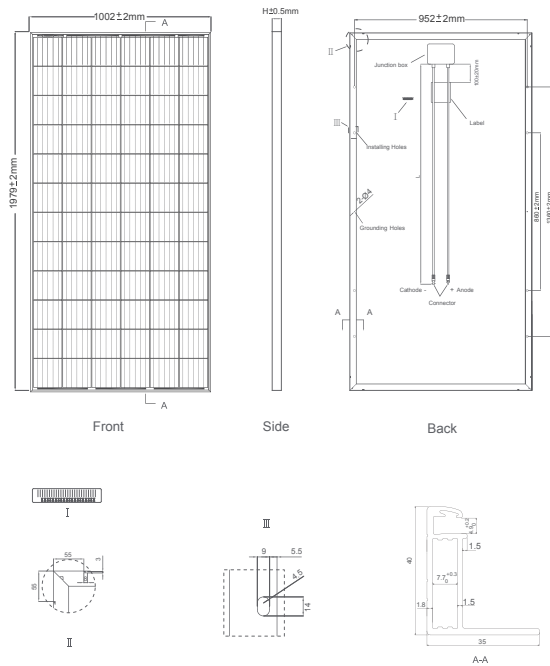
High salt mist and ammonia resistance certified by TUV NORD.

## LINEAR PERFORMANCE WARRANTY

10 Year Product Warranty • 25 Year Linear Power Warranty



## Engineering Drawings

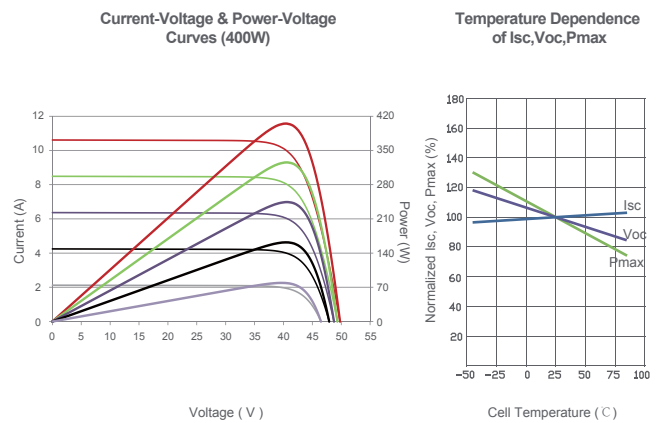


## Packaging Configuration

( Two pallets=One stack )

26pcs/pallet, 52pcs/stack, 572pcs/40'HQ Container

## Electrical Performance & Temperature Dependence



## Mechanical Characteristics

Cell Type	Mono PERC 158.75×158.75mm
No. of cells	72 (6×12)
Dimensions	1979×1002×40mm (77.91×39.45×1.57 inch)
Weight	22.5 kg (49.6 lbs)
Front Glass	3.2mm, Anti-Reflection Coating, High Transmission, Low Iron, Tempered Glass
Frame	Anodized Aluminium Alloy
Junction Box	IP67 Rated
Output Cables	TÜV 1×4.0mm², Length 1200mm or Customized Length
Connector	JK03M; Jinko PV Material

## SPECIFICATIONS

Module Type	JKM390M-72 (Plus)		JKM395M-72 (Plus)		JKM400M-72 (Plus)		JKM405M-72 (Plus)		JKM410M-72 (Plus)	
	STC	NOCT	STC	NOCT	STC	NOCT	STC	NOCT	STC	NOCT
Maximum Power (Pmax)	390Wp	294Wp	395Wp	298Wp	400Wp	302Wp	405Wp	306Wp	410Wp	310Wp
Maximum Power Voltage (Vmp)	41.1V	39.1V	41.4V	39.3V	41.7V	39.6V	42.0V	39.8V	42.3V	40.0V
Maximum Power Current (Imp)	9.49A	7.54A	9.55A	7.60A	9.60A	7.66A	9.65A	7.72A	9.70A	7.76A
Open-circuit Voltage (Voc)	49.3V	48.0V	49.5V	48.2V	49.8V	48.5V	50.1V	48.7V	50.3V	48.9V
Short-circuit Current (Isc)	10.46A	8.02A	10.54A	8.09A	10.61A	8.16A	10.69A	8.22A	10.76A	8.26A
Module Efficiency STC (%)	19.67%		19.92%		20.17%		20.42%		20.68%	
Operating Temperature (°C)	-40°C~+85°C									
Maximum System Voltage	1000VDC (IEC)									
Maximum Series Fuse Rating	20A									
Power Tolerance	0~+3%									
Temperature Coefficients of Pmax	-0.37%/°C									
Temperature Coefficients of Voc	-0.28%/°C									
Temperature Coefficients of Isc	0.048%/°C									
Nominal Operating Cell Temperature (NOCT)	45±2°C									

STC: Irradiance 1000W/m² Cell Temperature 25°C AM=1.5

NOCT: Irradiance 800W/m² Ambient Temperature 20°C AM=1.5 Wind Speed 1m/s

\* Power measurement tolerance: ± 3%