

Cheetah HC 60M 325-345 Watt

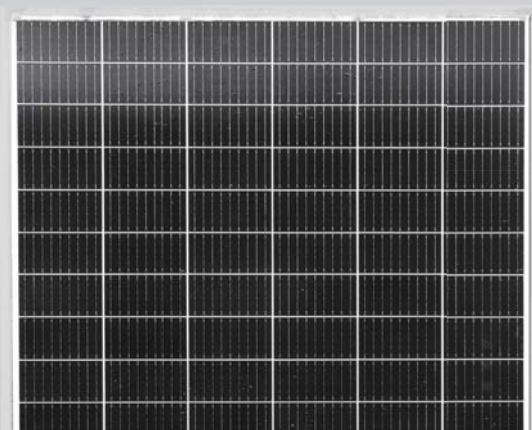
MONO PERC HALF CELL MODULE

Positive power tolerance of 0~+3%

- Half Cell
Mono PERC 60 Cell



PERC



KEY FEATURES



9 Busbar Solar Cell

9 busbar solar cell adopts new technology to improve the efficiency of modules, offers a better aesthetic appearance, making it perfect for rooftop installation.



High Efficiency

Higher module conversion efficiency (up to 20.45%) benefit from half cell structure (low resistance characteristic).



Low-light Performance

Advanced glass and cell surface textured design ensure excellent performance in low-light environment.



Severe Weather Resilience

Certified to withstand: wind load (2400 Pascal) and snow load (5400 Pascal).

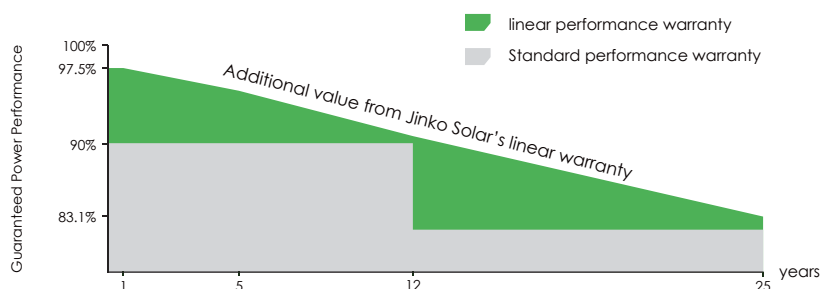
LINEAR PERFORMANCE WARRANTY

12 Year Product Warranty • 25 Year Linear Power Warranty

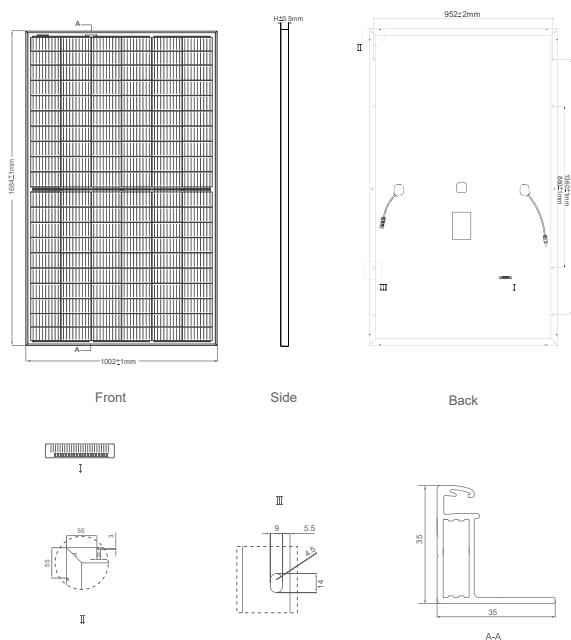


ISO9001:2015, ISO14001:2015, OHSAS18001
certified factory

IEC61215, IEC61730 certified product



Engineering Drawings

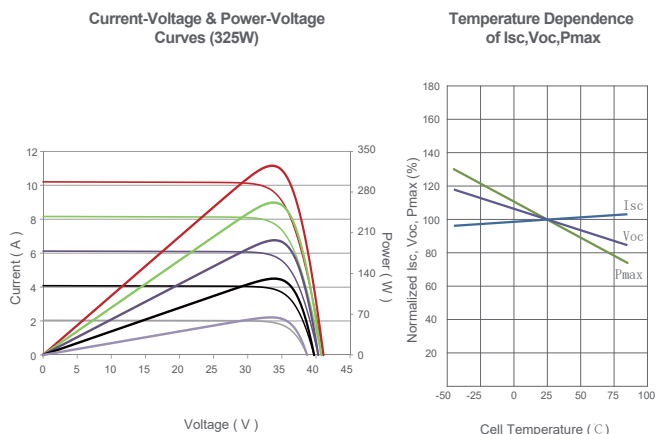


Packaging Configuration

(Two pallets = One stack)

31pcs/pallet, 62pcs/stack, 806pcs/40'HQ Container

Electrical Performance & Temperature Dependence



Mechanical Characteristics

Cell Type	Mono PERC 158.75×158.75mm
No.of Half-cells	120 (6×20)
Dimensions	1684×1002×35mm (66.30×39.45×1.38 inch)
Weight	19.0 kg (41.9 lbs)
Front Glass	3.2mm, Anti-Reflection Coating, High Transmission, Low Iron, Tempered Glass
Frame	Anodized Aluminium Alloy
Junction Box	IP67 Rated
Output Cables	TÜV 1x4.0mm², (+) 290mm, (-) 145mm or Customized Length
Connector	Jinko JK03M, Genuine MC4

SPECIFICATIONS

Module Type	JKM325M-60H-MBB		JKM330M-60H-MBB		JKM335M-60H-MBB		JKM340M-60H-MBB		JKM345M-60H-MBB	
	STC	NOCT	STC	NOCT	STC	NOCT	STC	NOCT	STC	NOCT
Maximum Power (Pmax)	325Wp	241Wp	330Wp	245Wp	335Wp	249Wp	340Wp	252Wp	345Wp	256Wp
Maximum Power Voltage (Vmp)	33.89V	31.58V	34.03V	31.82V	34.15V	31.84V	34.28V	31.95V	34.4V	32.1V
Maximum Power Current (Imp)	9.59A	7.64A	9.70A	7.70A	9.81A	7.81A	9.92A	7.90A	10.03A	7.98A
Open-circuit Voltage (Voc)	40.02V	37.69V	40.17V	37.83V	40.32V	37.98V	40.47V	38.12V	40.62V	38.26V
Short-circuit Current (Isc)	10.24A	8.27A	10.30A	8.32A	10.36A	8.37A	10.42A	8.42A	10.48A	8.46A
Module Efficiency STC (%)	19.26%		19.56%		19.85%		20.15%		20.45%	
Operating Temperature (°C)					-40°C~+85°C					
Maximum System Voltage					1000VDC (IEC)					
Maximum Series Fuse Rating					20A					
Power Tolerance					0~+3%					
Temperature Coefficients of Pmax					-0.36%/°C					
Temperature Coefficients of Voc					-0.29%/°C					
Temperature Coefficients of Isc					0.048%/°C					
Nominal Operating Cell Temperature (NOCT)					45±2°C					

STC:  Irradiance 1000W/m²  Cell Temperature 25°C  AM=1.5

NOCT:  Irradiance 800W/m²  Ambient Temperature 20°C  AM=1.5  Wind Speed 1m/s

* Power measurement tolerance: $\pm 3\%$