

Tiger Bifacial 450-470 Watt

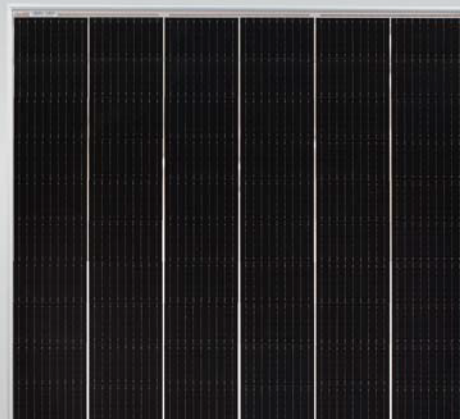
Tiling Ribbon (TR) Technology

Positive power tolerance of 0~+3%

ISO9001:2015, ISO14001:2015, ISO45001:2018
certified factory.

IEC61215, IEC61730 certified products.
(Made in China/Malaysia/U.S./Vietnam)

N-Type



KEY FEATURES



TR technology + Half Cell

TR technology with Half cell aims to eliminate the cell gap to increase module efficiency (mono-facial up to 20.65%)



Low Light Induced Degradation

The N-type cell shows extremely low light induced degradation (LID) performance when comparing with the P-type cell.



9BB instead of 5BB

9BB technology decreases the distance between bus bars and finger grid line which is benefit to power increase.



Higher lifetime Power Yield

1% first year degradation,
0.4% linear degradation



Best Warranty

15 year product warranty,
30 year linear power warranty



Better low-light performance

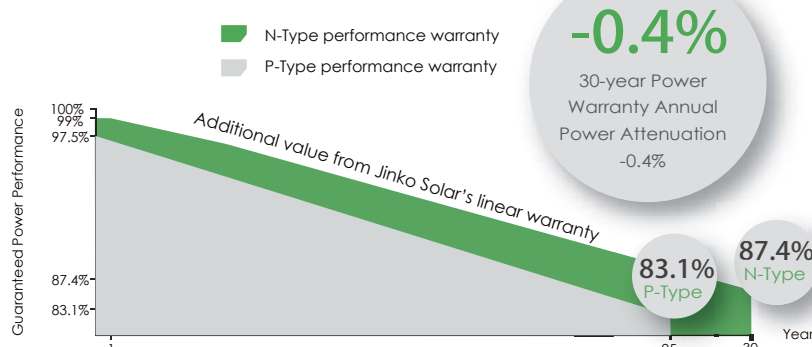
Excellent performance in low-light environments
(e.g. early morning, dusk, and cloud, etc.)



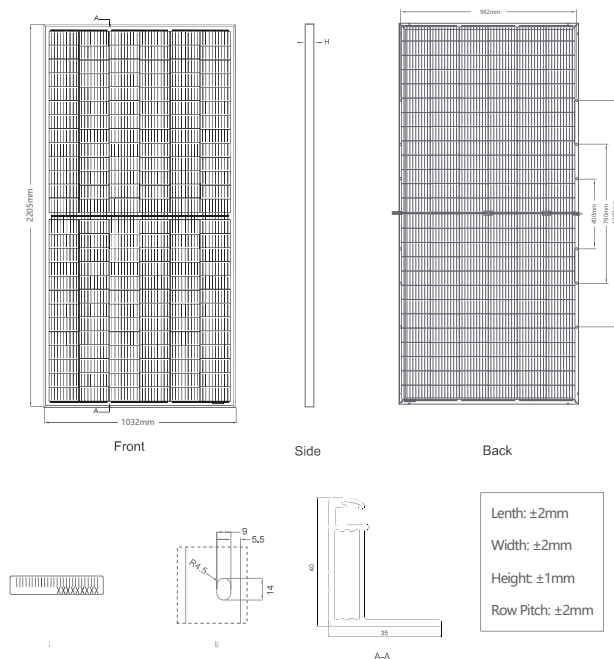
- ISO9001:2015, ISO14001:2015, OHSAS18001 certified factory
- IEC61215, IEC61730 certified product

LINEAR PERFORMANCE WARRANTY

15 Year Product Warranty 30 Year Linear Power Warranty
0.4% Annual Degradation Over 30 years



Engineering Drawings



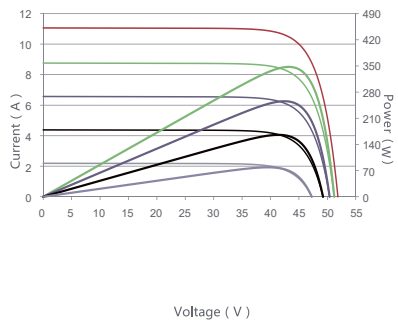
Packaging Configuration

(Two pallets = One stack)

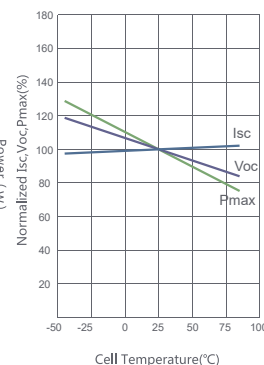
27pcs/pallets, 54pcs/stack, 540pcs/ 40'HQ Container

Electrical Performance & Temperature Dependence

Current-Voltage & Power-Voltage Curves (460W)



Temperature Dependence of Isc, Voc, Pmax



Mechanical Characteristics

Cell Type	N type Mono-crystalline
No. of cells	156 (2×78)
Dimensions	2205×1032×40mm (86.81×40.63×1.57 inch)
Weight	26.5 kg (58.42 lbs)
Front Glass	3.2mm, Anti-Reflection Coating, High Transmission, Low Iron, Tempered Glass
Frame	Anodized Aluminium Alloy
Junction Box	IP67 Rated
Output Cables	TUV 1×4.0mm ² (+): 250mm, (-): 150 mm or Customized Length
Connector	JK03M/2B, MC4 EV02
Fire Rating	Class C

SPECIFICATIONS

Module Type	JKM450N-7RL3-TV		JKM455N-7RL3-TV		JKM460N-7RL3-TV		JKM465N-7RL3-TV		JKM470N-7RL3-TV	
	STC	NOCT	STC	NOCT	STC	NOCT	STC	NOCT	STC	NOCT
Maximum Power (Pmax)	450Wp	336Wp	455Wp	339Wp	460Wp	343Wp	465Wp	347Wp	470Wp	350Wp
Maximum Power Voltage (Vmp)	44.03V	40.57V	44.26V	40.78V	44.49V	40.98V	44.71V	41.18V	44.94V	41.37V
Maximum Power Current (Imp)	10.22A	8.27A	10.28A	8.32A	10.34A	8.37A	10.40A	8.42A	10.46A	8.47A
Open-circuit Voltage (Voc)	53.01V	50.04V	53.24V	50.25V	53.47V	50.47V	53.70V	50.69V	53.93V	50.90V
Short-circuit Current (Isc)	10.93A	8.83A	10.99A	8.88A	11.05A	8.92A	11.11A	8.97A	11.17A	9.02A
Module Efficiency STC (%)	19.78%		20.00%		20.21%		20.43%		20.65%	
Operating Temperature(°C)	-40°C~+85°C									
Maximum system voltage	1500VDC (IEC)									
Maximum series fuse rating	25A									
Power tolerance	0~+3%									
Temperature coefficients of Pmax	-0.34%/°C									
Temperature coefficients of Voc	-0.28%/°C									
Temperature coefficients of Isc	0.048%/°C									
Nominal operating cell temperature (NOCT)	45±2°C									
Refer. Bifacial Factor	85±5%									

BIFACIAL OUTPUT-REAR SIDE POWER GAIN

		JKM450N-7RL3-TV	JKM455N-7RL3-TV	JKM460N-7RL3-TV	JKM465N-7RL3-TV	JKM470N-7RL3-TV
		STC	NOCT	STC	NOCT	STC
5%	Maximum Power (Pmax)	473Wp	478Wp	483Wp	488Wp	494Wp
	Module Efficiency STC (%)	20.76%	20.99%	21.23%	21.46%	21.69%
15%	Maximum Power (Pmax)	518Wp	523Wp	529Wp	535Wp	541Wp
	Module Efficiency STC (%)	22.74%	22.99%	23.25%	23.50%	23.75%
30%	Maximum Power (Pmax)	585Wp	592Wp	598Wp	605Wp	611Wp
	Module Efficiency STC (%)	25.71%	25.99%	26.28%	26.56%	26.85%

*STC: Irradiance 1000W/m² Cell Temperature 25°C

NOCT: Irradiance 800W/m² Ambient Temperature 20°C AM=1.5 Wind Speed 1m/s

* Power measurement tolerance: -3~+3%

Jinko Solar Co.,Ltd reserves the final right for explanation on any of the information presented hereby. TR JKM450-470N-7RL3-TV-A1-EN-For AUSCEC